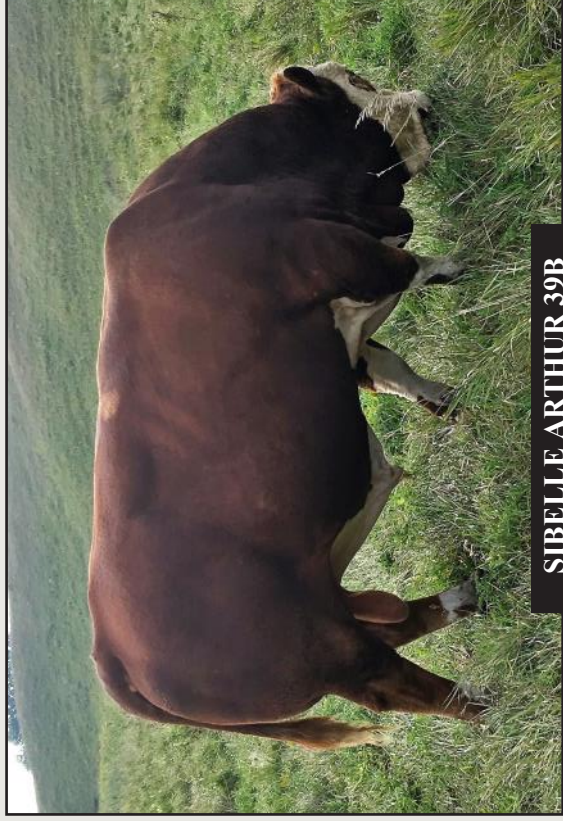


S/M FLECKVIEH CATTLE

Private Treaty Bull Sale

Jeff Sorenson

48186 257th Street
Garretson, South Dakota 57030
sorenson@augie.edu
605-359-8728 (cell)
www.smfleckvieh.com



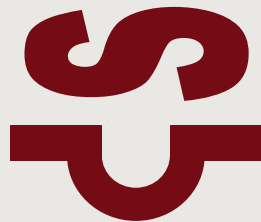
SIBELLE ARTHUR 39B



S/M FLECKVIEH CATTLE

2021 Sale Bulls

Welcome to the 2021 lineup of sale bulls at S/M Fleckvieh Cattle. These bulls are the product of **our 46th year** breeding Fleckvieh Simmental cattle, beginning in 1975.



Our Sale Bulls

We have more sale bulls this year, and all but one are polled. They are for sale by private treaty beginning in February, pre-priced and first come, first serve, at our listed price. A half-down deposit will hold your bull for you until we semen check in late April. We'll give the bull his spring pre-breeding shots, including Bovishield Gold, Pinkeye and Footrot vaccines, and deliver to you within 250 miles. Pictured here as developing calves at 9-10 months of age, they'll be serviceable age bulls when delivered to you.

Expected Progeny Differences (EPDs)

We have focused closely on EPDs over the years, aiming at a balance of the most important economic traits. After many generations of goal-oriented breeding to lock in dependable genetics, you will see the results in the balanced EPDs of these bulls. There are calving ease bulls that also have good growth and maternal EPDs, and there are high growth bulls with useful calving ease and maternal trait EPDs.

A sample EPD chart
S/M Harding H141

CE	WW	YW	MCE	MWW	API	TI
11	76	105	7	77	126	76
10	25	30	10	20	2	4

On this sample EPD chart, the top numbers are the raw EPDs for each trait as calculated by the American Simmental Association. The bottom row of numbers are the animal's ranking among cattle in the breed.

For example, this bull is in the top 10% for Calving Ease, the top 25% for Weaning Weight, his All Purpose Index is in the top 2%, and his Terminal Index is in the top 4% for fullblood cattle in the ASA database.

Explanation of the EPD Chart

CE = Calving Ease Index
WW = added pounds Weaning Weight
YW = added pounds Yearling Weight
MCE = Maternal Calving Ease Index
MWW = added pounds Maternal Weaning Weight
API = All Purpose Index
TI = Terminal Index

The bottom number on the chart (with each bull) reflects the rank of that EPD, eg. an EPD ranking 25 is in the top 25% of Fullblood Simmental bulls.

Fullblood Fleckvieh Cattle

We breed Fullblood Fleckvieh Simmental cattle, whose genetics trace only to the herdbooks of Germany and Austria where these moderate, beef-type Simmental cattle originated. Being Fullblood offers you the maximum added heterosis, the “pop” from hybrid vigor when crossed with other breeds of cattle.

The Fleckvieh female’s moderate frame, natural easy fleshing and big volume capacity help her stay in good condition and rebreed on schedule year after year, on grass and poorer roughages.

Our Breeding Goals

We focus on economic traits that add to the bottom line:



- Type – big-volume, deep-fleshed cattle that are soggy, long and thick.
- Calving ease, both direct and maternal — in a range that works under commercial conditions.
- Females – tight udders with small teats, feminine, sound feet and legs, with the depth and barrel to thrive on grass and corn-stalks.
- Disposition – docile and easy to handle.
- Polled – as one of several important economic traits.
- Color – non-diluted dark red with lots of protective pigment.

Our Fullblood Fleckvieh Simmentals are run like commercial cattle, so we know how they perform in the real world. We cull the calves hard for performance, disposition and soundness, and grow out only the best as sale bulls. They are developed slowly on a high-roughage diet of free-choice grass hay, a pound per hundred of a half oats/ half corn mix, and access to a Flaxlic mineral tub that boosts semen quality. They grow well but stay in their working clothes, so that they’re sound, fertile, ready to go to work—and will stand up for years of service for you.

Please check out our website at:
www.smfleckvieh.com. Text, email or give a call. I would love to talk about your program, and ours, and how we can help you breed for profit in the years to come.

Jeff Sorenson

605-359-8728 sorenson@augie.edu





S/M HARDING H141

3731445

04/01/2020 BW 89 AWW 828/ 110 AYW 1349/ 106 Polled

Virginia Walker 97W

Sibelle Arthur 39B

Sibelle India 25W

Anchor T Legend 7H

S/M Franchesca B141

S/M Franchesca Z121

A first class herdsire, that we went back and forth all winter about keeping to replace his sire Arthur — or making available for sale. If Arthur at seven was not still so healthy and able, this bull would not leave the place.



S/M Franchesca B141

On top of being an Arthur son, S/M Harding H141 is also out of Franchesca B141, the Legend-sired dam of our herdsire, S/M Diesel D141.

Check out his EPD's. Not many bulls rank in the top 10% for Calving Ease, have an All Purpose Index in the top 2%, and Terminal Index in the top 4% of the breed — with respectable growth numbers as well.

The bull himself is attractive, mahogany red, straight and sound, middle and butt and muscle and top, a sweet disposition, and polled.

If possible before delivery, I'd like to collect semen for in-herd use only.

Non-Diluter.

CE	WW	YW	MCE	MWW	API	TI
11	76	105	7	77	126	76
10	25	30	10	20	2	4

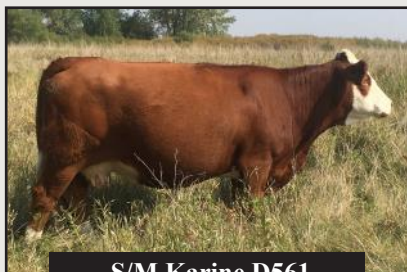


S/M HOMESTEAD H561

3731415

3/08/2020 BW 95 AWW 878/ 117 AYW 1411/ 111 Horned

Virginia Walker 97W
 Sibelle Arthur 39B
 Sibelle India 25W
 IPU Radium 20A
 S/M Karine D561
 S/M Karinne B541



S/M Karine D561

S/M Homestead H561 is our only horned bull offered this year — a brute of a calf that demonstrates the power in these progeny by Sibelle Arthur 39B.

Homestead's ultra-feminine, tight-uddered young dam by IPU Radium 20A has outproduced herself again; a daughter by Arthur at the top of last year's heifer calves sold to a breeder in Oregon.

He's attractive too — here he is as a calf showing off for the camera — deep dark red, super long, plenty of middle and muscle, and nearly as big as his dam.



Non-Diluter.

CE	WW	YW	MCE	MWW	API	TI
4	83	112	3	80	99	69
50	10	15	50	5	45	20



S/M HEROD H541

3731449

3/18/2020 BW 96 AWW 814/ 108 AYW 1330/ 105 Polled

Virginia Walker 97W
 Sibelle Arthur 39B
 Sibelle India 25W
 S/M Stout Z543
 S/M Karinne B541
 S/M Karinna W591



S/M Karinne B541

If you like them powerful with some chrome, you'll like S/M Herod H541. Another brute of a bull sired by Sibelle Arthur 39B, and polled.

There is bred-in consistency here. Herod H541 is 3/4 in blood to the horned bull Homestead H561. Homestead's dam S/M Karine D561, is a maternal sister to this bull, both out of this tank of a homozygous polled cow S/M Karinne B541.

He too is dark dark red (and white), thick and muscled top to bottom, plenty of middle, and a show-off attractive calf as well.

This guy (and his 3/4 brother) will give you pounds on the scale, and out of this cow family you will want to keep the productive daughters.

Non-Diluter.

CE	WW	YW	MCE	MWW	API	TI
6	78	111	3	76	107	71
35	15	15	50	25	20	15



S/M HOMER H431

3731430

4/06/2020 BW 92 AWW 737/ 98

AYW 1211/ 95

Polled

Virginia Walker 97W
 Sibelle Arthur 39B
 Sibelle India 25W
 S/M Yahtzee Y092
 S/M Carol A431
 S/M Caroline Y414



S/M Carol A431

Sibelle Arthur 39B doesn't miss.
 This attractive calf is by a homozygous polled female, S/M Carol A431 that is moderate, easy-going, easy-keeping and easy to look at, beautiful uddered and feminine. Pictured here at eight, she looks like a three-year-old. Another bull that if you like Fleckvieh for the attractive, functional females they give you, he will do the job.

Tested Non-Diluter.

CE	WW	YW	MCE	MWW	API	TI
6	70	96	4	67	104	65
35	55	60	45	90	30	50



S/M HALFBACK H081

3731433

2/20/2020 BW 61 AWW 734/ 97 AYW 1297/ 102 Homozygous Polled

IPU Radium 20A

S/M Diesel D141

S/M Franchesca B141

PHS Bank Roll 335B

S/M Rose Ann F081

S/M Rachel D061



S/M Diesel D141

Homozygous polled herdsire. Another calf we spent the winter deliberating whether to retain for use on our own heifers. His sire, S/M Diesel D141 is a complete no-miss for calving ease on heifers. We unfortunately lost Diesel due to injury last fall. But with some beautiful Diesel daughters in production, and semen in the tank — we've decided this good calf can sell. If Halfback wouldn't have to run with a set of his half-sisters, he'd stay here.

Halfback's dam is a moderate, homozygous polled, big-middled first-calver with a small but milky udder, that outproduces herself.

Balanced EPD's. Very moderate birthweight. Moderate frame, thickness front to back and down his top, big middle and big butt, and style to burn. A sweet disposition too, he's a friend in the bull-pen.

Non-Diluter.

CE	WW	YW	MCE	MWW	API	TI
12	67	94	8	74	118	70
10	65	65	4	35	5	20



S/M HURON H171

3731443

4/07/2020 BW 91 AWW 805/ 107 AYW 1295/ 102 Homozygous Polled

IPU Radium 20A

S/M Diesel D141

S/M Franchesca B141

PHS Bank Roll 345B

S/M Franchesca E171

S/M Franchesca W191



S/M Franchesca E171

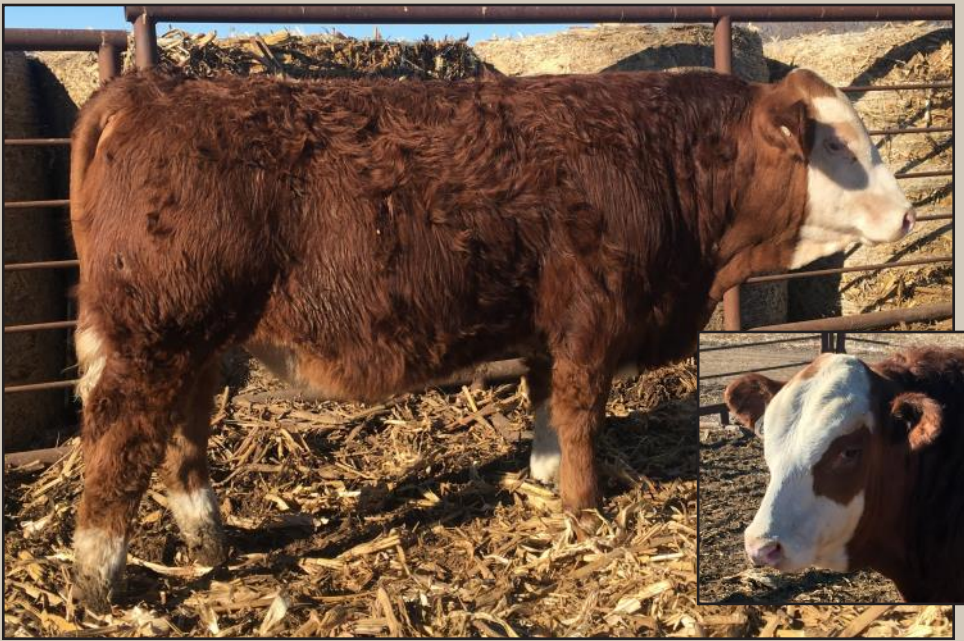
Another homozygous polled herdsire prospect, Huron H171 is a 3/4 brother in blood to Halfback H081. Both are sired by Diesel, and by good young daughters of PHS Bank Roll 345B.

Huron H171 is uniquely colored with loads of pigment, and fancy, fancy, fancy. Like all the Diesel calves, he is very quiet and friendly.

If you remember last year's calves, our lead-off bull S/M Granger G171 was the first calf by this productive young female, S/M Franchesca E171, who goes back to our foundation Dora Lee Franchesca cow. Note that Huron H171, sired by Diesel, goes back to the Franchesca cow family twice, on top and bottom of his pedigree. It's well-known that linebreeding to the best proven cow families makes consistently good females. Huron will create productive, fancy, and all polled females.

Non-Diluter.

CE	WW	YW	MCE	MWW	API	TI
7	70	98	6	75	105	67
25	55	55	15	30	25	30



S/M HUNTER H68

3731439

4/26/2020 BW 94 AWW 810/ 108

AYW 1363/ 107

Polled

IPU Radium 20A

S/M Diesel D141

S/M Franchesca B141

Gibbons Jeremiah

Big Sky Krystall

Anchor T Krystall 47G



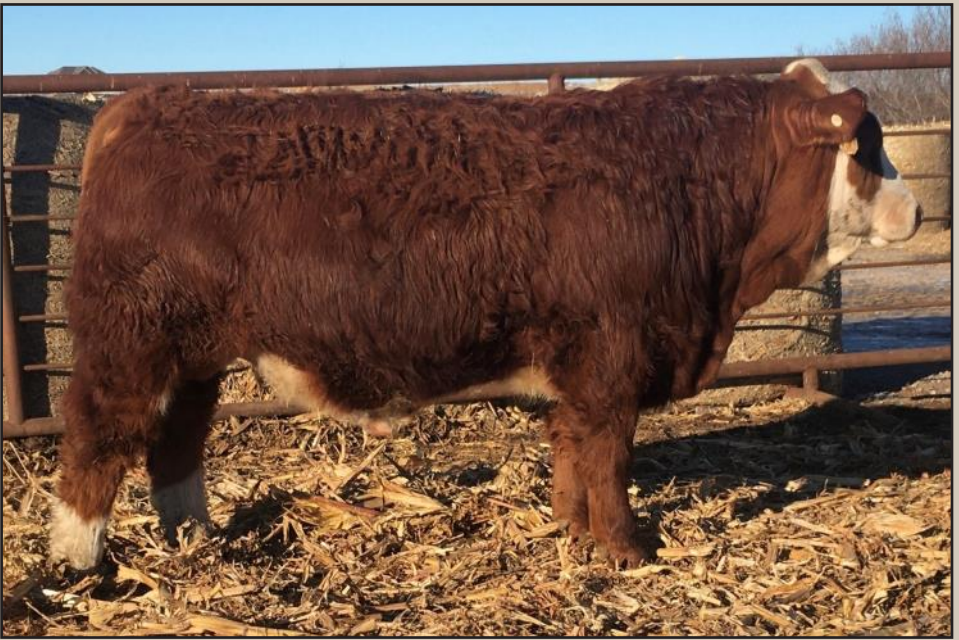
Big Sky Krystall

S/M Hunter G68 is one of our later born 2020 bull calves, but will be ready and able for a breeder who turns out in early summer. He's a big-middled, growthy young bull that has kept up with and surpassed many of his older classmates. A classy look to him, deep dark red, goggled on one side.

We've come to expect these good bulls from his dam Big Sky Krystall, that we were fortunate to import from Canada when Big Sky dispersed. She was the last calf at age 18 by Anchor T Krystall 47G, a foundation female treasured for the maternal value that she contributes. I wish this cow would give us a polled daughter to build from — but the good bulls she has kicked out for us are a value too. With the quality of this calf we bred her back to Diesel, so maybe this year?

Tested Non-Diluter

CE	WW	YW	MCE	MWW	API	TI
9	68	97	6	81	104	66
15	60	60	20	5	25	45



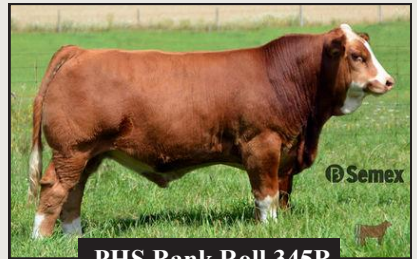
S/M HENRIK H481

3731426

2/27/2020 BW 73 AWW 705/ 94 AYW 1226/ 97 Polled/S

**Sibelle Dirty Harry 25Z
PHS Bank Roll 345B
PHS Yuma**

**Sibelle Arthur 39B
S/M Lorissa F481
S/M Lissa U481**



PHS Bank Roll 345B

We've had great success using Sibelle Arthur 39B on our young polled Bank Roll 345B daughters— so we gave a try here with the same sires, but the other way around. This calf is sired by Bank Roll and out of a polled first-calf Arthur daughter — and you can see, it worked. He looks much like his sire.

This is a bread and butter bull — sound and straight, plenty of middle and muscle and top, moderate framed, color is right, good disposition, birth weight where you want it from a heifer, and bred right.

Non-Diluter.

CE	WW	YW	MCE	MWW	API	TI
5	73	103	2	73	110	68
50	40	40	60	50	15	25

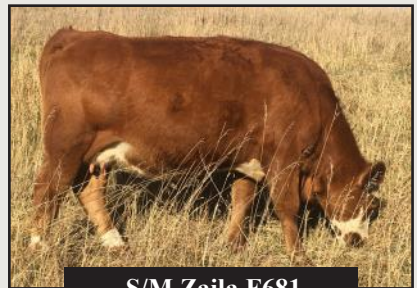


S/M HANZ H681

3731435

2/21/2020 BW 66 AWW 700/ 93 AYW 1227/ 97 Polled

ABR Sir Arnolds Image
 Sanmar Polled Pharao 12P
 Sanmar Pol Teardrop 12M
 Crossroad Radium 789U
 S/M Zaila F681
 JNR Petra II



S/M Zaila F681

On these two pages are sons of an old Canadian-bred sire Sanmar Polled Pharao 12P that we used years ago, and imported the last semen available in the US to reintroduce again. Pharao calves no-fault on heifers, and reduces frame and adds middle and thickness to anything you put him in. You'll find his name on the dam side of some top Canadian pedigrees too for the moderate, productive long-lived females he produces.

The dam of S/M Hanz H681 is a young heifer sired by Crossroad Radium, another proven calving-ease sire, who also is known for his attractive, milky females.

Hanz has plenty of thickness, depth, middle and muscle, but primarily he's a heifer bull, bred that way, calved that way with his small unassisted birthweight.

Non-Diluter.

CE	WW	YW	MCE	MWW	API	TI
9	63	85	6	64	113	67
15	80	90	15	99	10	35



S/M HANSEL H143

3731412

3/14/2020 BW 104 AWW 801/ 106 AYW 1284/ 101 Polled

**ABR Sir Arnolds Image
Sanmar Polled Pharao 12P
Sanmar Pol Teardrop 12M**

**Emperor
S/M Franchesca B143
S/M Franchesca X101**

Sanmar Polled Pharao, with all the depth, middle and thickness he adds, can also punch out some power.

With his bald face and body white, S/M Hansel H143 isn't pretty, but he sure is beef.

Thick, thick, thick all the way through, he's wide-topped and carries his thickness down through a full, deep quarter. You can see that even as a baby, he was just a chunk.

S/M Hansel H143 is dammed by a highly productive female in the Franchesca line, a close-up granddaughter of the old matriarch herself.

With his extra birthweight, Hansel is not a heifer bull, but will add pounds when used on mature cows.

Non-Diluter.



S/M Franchesca B143 w/ Hansel

CE	WW	YW	MCE	MWW	API	TI
3	75	102	3	71	110	71
65	30	40	55	60	15	15



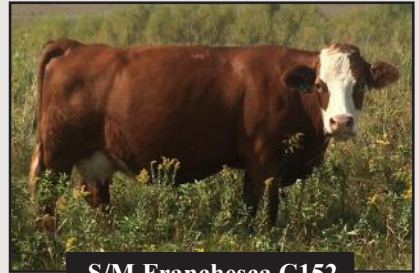
S/M HERMANN H152

3731416

3/11/2020 BW 102 AWW 835/ 111 AYW 1334/ 105 Polled

**Emsig
Emperor
351**

**Kuntz Impact 7Z
S/M Franchesca C152
S/M Franchesca Z122**



S/M Franchesca C152

Here is a set of polled bulls, approximately 7/8 brothers in blood to each other. Both are sired by the old homozygous polled German bull Emperor. They are out of maternal sisters, and whose sires go back to the cow-maker flushmate brothers Anchor T Impact and Anchor T Legend.

S/M Hermann H152 is a deep dark red bull like his dam, with a red face and splashes of color. He's had a stout, proud look from the start, and has grown into a strong young bull himself with lots of upside. He's a bigger calf, with lots of thickness throughout contributing to his pounds, which you see also in his strong performance numbers.

Tested Non-Diluter

CE	WW	YW	MCE	MWW	API	TI
0	77	108	-5	73	96	67
90	20	25	99	50	50	30



S/M HELMUT H142

3731421

3/16/2020 BW 93 AWW 741/ 98

AYW 1254/ 99

Polled

**Emsig
Emperor
351**

**Anchor T Legend 7H
S/M Franchesca B142
S/M Franchesca Z122**



S/M Franchesca B142 w/ Helmut

S/M Helmut H142 is an approximate 7/8 brother in blood to the Hermann H152 calf. Helmut’s dam, Franchesca B142 is a feminine direct daughter of Anchor T Legend, maybe the breed’s best-known cow-maker.

Emperor, the old German homozygous polled sire, didn’t get a lot of use when imported in the late 80’s because he carried the diluter gene. But we found him to be the best female producer of those early imports, his daughters sound and functional — so used him on our best horned cows, kept the females, and then tested for the diluter gene to breed back out of it. We have a number of good, long-lasting females that go back to him.

These two good performing, sound and useful bulls will be some of the last by Emperor, as his semen is no longer to be found.

Tested Non-Diluter.

CE	WW	YW	MCE	MWW	API	TI
3	74	98	-2	70	106	68
60	35	55	95	75	25	25



S/M HERSCHEL H161

3731424

3/12/2020 BW 97 AWW 776/ 103 AYW 1287/ 101 Homozygous Polled

Scottish Neff

OSF Vazquex 1B

Cania Gold Erm Extra

PHS Bank Roll 345B

S/M Franchesca D161

S/M Franchesca W192

What to do with a super-stout, beefy young bull, that puts everything together just as you'd like, including homozygous polled — but inherited the diluter gene from his sire? Offer him up as you see him, mellow yellow, and will be useful on a set of red or Charolais cross cows.

Admire the calf for what he is: super-stout, beefy, long as a train, soft-made, heavy muscled, friendly and gentle, and will likely make some dandy daughters too.

The dam of this calf is a moderate-made, good-uddered polled young daughter of PHS Bank Roll that has given us three calves — a retained daughter, and now two good, useful sale bulls.

Tested Diluter Carrier

CE	WW	YW	MCE	MWW	API	TI
2	71	103	-1	74	96	67
80	50	35	95	40	60	30

REFERENCE SIRES

SIBELLE ARTHUR 39B

2981208 3/19/2014
 BW 112 AWW 907
 YW 1613 Horned
 Non-Diluter



Sibelle Arthur 39B sires exactly what we expected when we invested in this great sire: volume, power, and thickness. His sons are growthy, powerful beef bulls. His daughters are feminine young cows with excellent udders, and pass

on Arthur's beef type to their calves. Philippe Bellevance of Ferme Sibelle claims Arthur is the best son of Virginia Walker, his senior herdsire, and from what he's doing for us, we agree.

Arthur has four sons and a grandson on offer this year. Semen available for the US, Canada, Mexico and the EU.

CE	WW	YW	MCE	MWW	API	TI
7	71	98	4	69	111	68
25	45	55	35	80	15	25

PHS BANK ROLL 345B

3047163 2/03/2014
 BW 96 AWW 861
 Polled Non-Diluter



When Semex bought Bank Roll on the PHS dispersal, we bought his dam, PHS Yuma to begin a female line. Several of the good polled bulls on offer are out of Bank Roll daughters, and there is one son.

Bank Roll's calves come easy enough that we have used him for heifers. Then they grow out to be just as fancy as he is. He works well on big framed cows, moderating frame and adding dimension and softness. Sons are attractive, deep, well muscled bulls. Daughters are excellent, milky mothers — big bodied, feminine females like his dam.

CE	WW	YW	MCE	MWW	API	TI
5	75	112	3	75	109	67
45	30	15	45	25	15	35

REFERENCE SIRES

S/M DIESEL D141

3139581 3/17/2016

BW 90 AWW 832

YW 1352 Polled

Non-Diluter

S/M Diesel D141 has done an amazing job for us. We retained him for use on heifers, and he became our go-to for calving worry free.

In addition, his sons are attractive (like Diesel himself) being solid dark colored with lots of pigment, clean-fronted, good headed, and plenty of growth to them. His first daughters are making very feminine, milky, good-uddered young females. Diesel was super friendly as a calf, and he passes that sweet disposition to all his calves, too.

Diesel has three sons on offer this year, and the H141 bull is a maternal brother. Semen available for the US.



CE	WW	YW	MCE	MWW	API	TI
13	69	93	10	73	118	70
4	60	70	2	45	5	20

SANMAR POLLED PHARAO 12P

2328741 1/13/2004

BW 88 AWW 807

YW 1371 Polled

Non-Diluter

Pharao is an old Canadian bred bull that has become known in some of the best pedigrees for his calving ease, and moderate, big-middled females. We imported the last semen available for the US

recently, to use again on heifers — and where his moderate stature would benefit big, powerful cows.

We have two good Pharao sons on offer this year.



CE	WW	YW	MCE	MWW	API	TI
13	56	73	12	56	130	69
5	99	99	1	99	1	25

S/M Fleckvieh Cattle
Jeff Sorenson
48186 257th Street
Garretson, SD 57030

